

Sensitivity Wavelength Range: 800nm ~ 2600nm

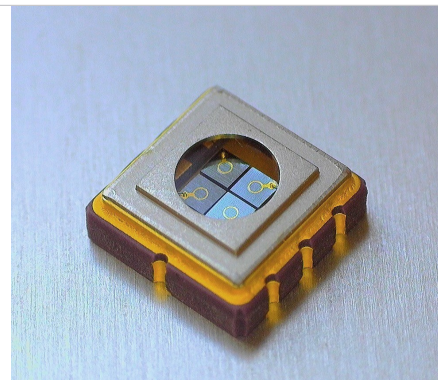
The MTSM2601SMF2-SP4-030, a high sensitivity and high reliability product series, is ideally suited for Optical Communication devices. Custom packaging options for this die are also available.

FEATURES

- > High Speed Response - 1.0GHz
- > 5mm x 5mm Seam Welded Surface Mount Package
- > Total Chip Area of 1.9mm x 1.9mm / High Sensitivity
- > Spectral Range: 800nm - 2600nm
- > 4 Individual 0.3mm active area photodiodes

APPLICATIONS

- > High Speed Optical Communications
- > Industrial Controls
- > Optical Switches
- > LIDAR
- > Medical



Absolute Maximum Ratings (Ta=25°C)

ITEMS	SYMBOL	RATINGS	UNIT
Active Area	Φ	0.3mm x 4	mm
Operating Temperature Range	T _{opr}	-40 to +85	°C
Storage Temperature Range	T _{stg}	-40 to +125	°C

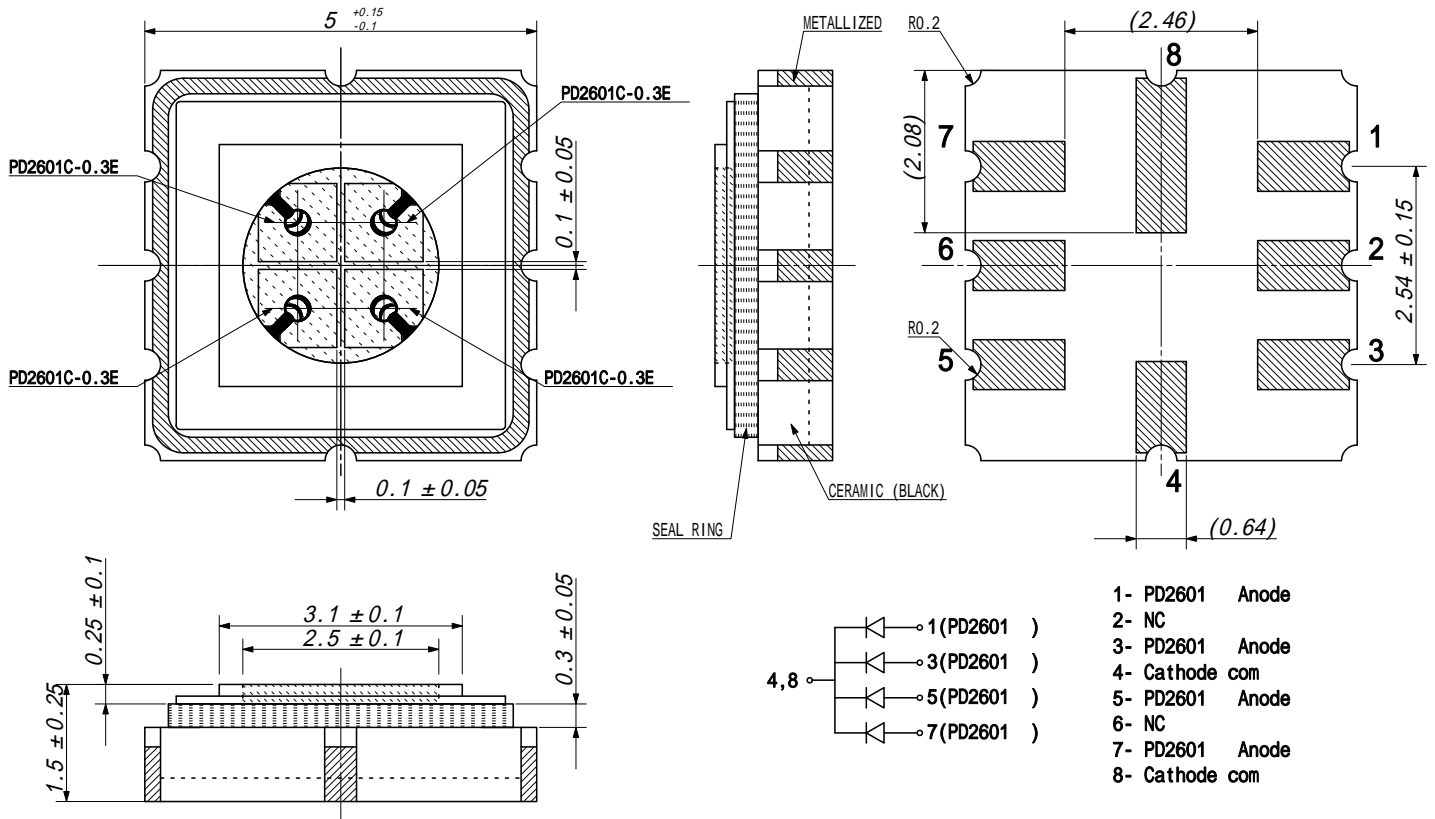
Electrical & Optical Characteristics (Ta = 25°C)

ITEMS	SYMBOL	CONDITIONS	MIN	TYP	MAX	UNIT
Breakdown Voltage	VR	IR=100uA	--	--	1	V
Sensitivity Range	λ	VR=0V	800	--	2600	nm
Dark Current	ID	VR=0V	--	120	--	nA
Dark Current	ID	VR=1V	--	100	--	uA
Capacitance	C	VR=0V	--	150	--	pF
Capacitance	C	VR=1V	--	20	--	pF
Responsivity	R	λ =2400nm	--	1.24	--	A/W
Shunt Resistance	RS	VR=10mV	--	3.4	--	kOhm
Quantum Efficiency	QE	λ =1840nm	--	72	--	%

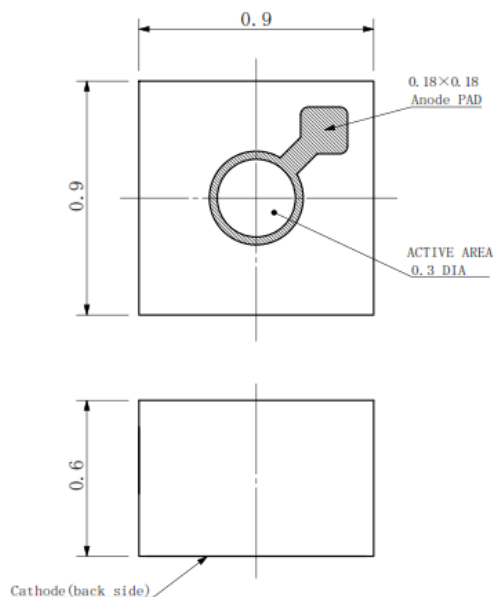
*1: Device specifications are (Per Element)

2025-05-20

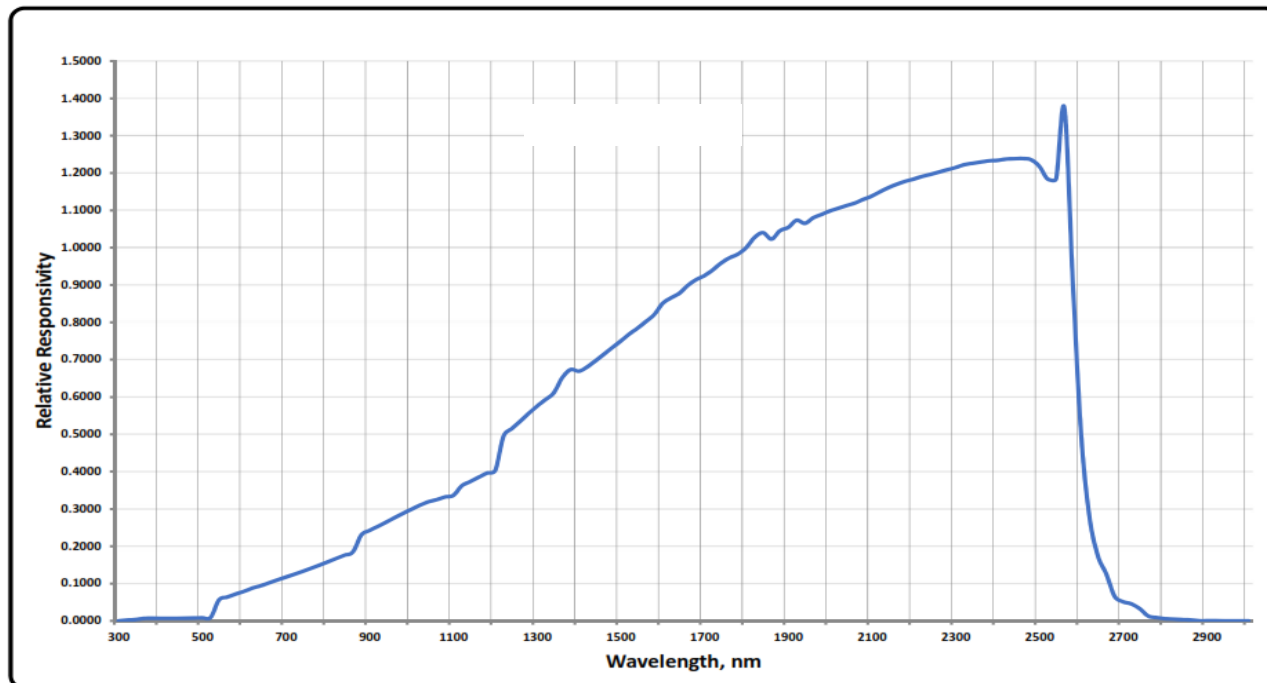
Package Dimensions



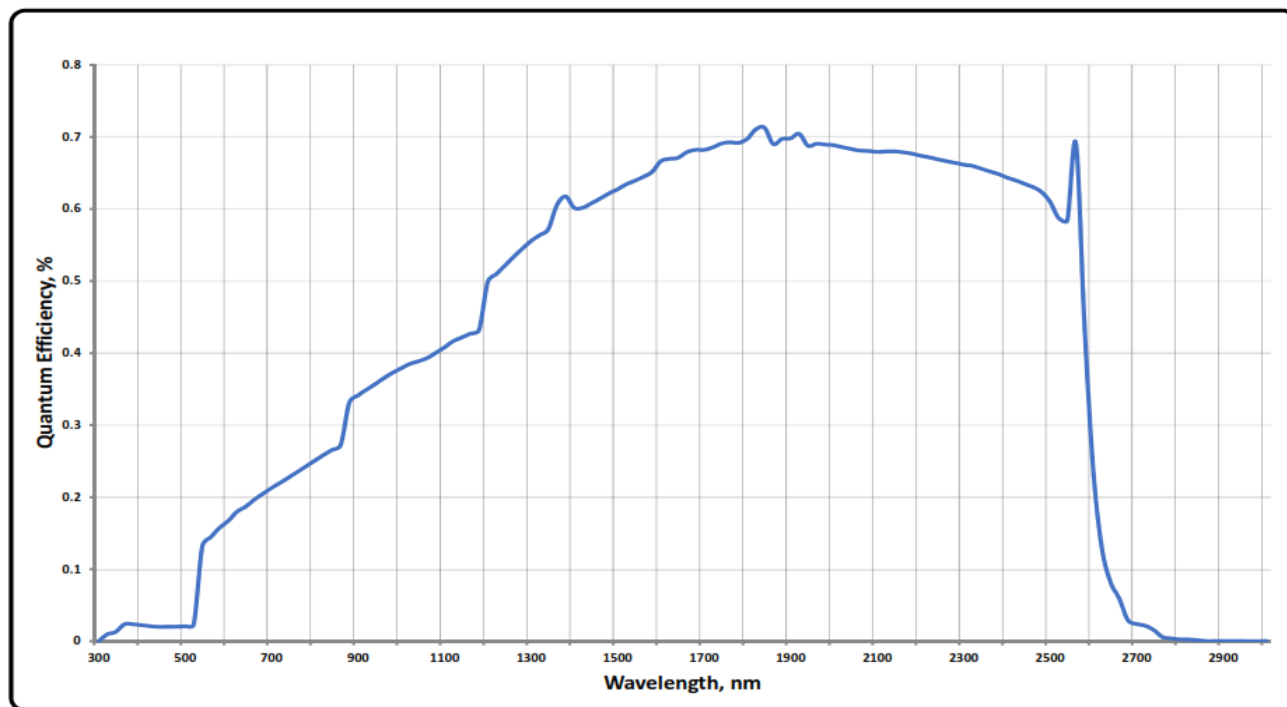
Die Dimensions



Spectral Responsivity

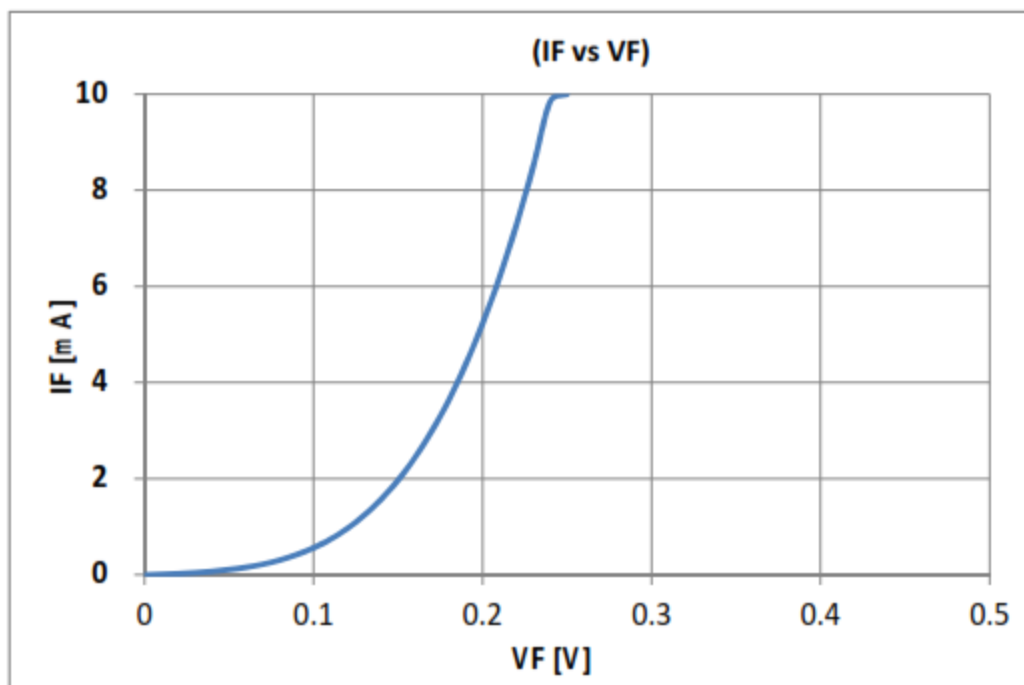
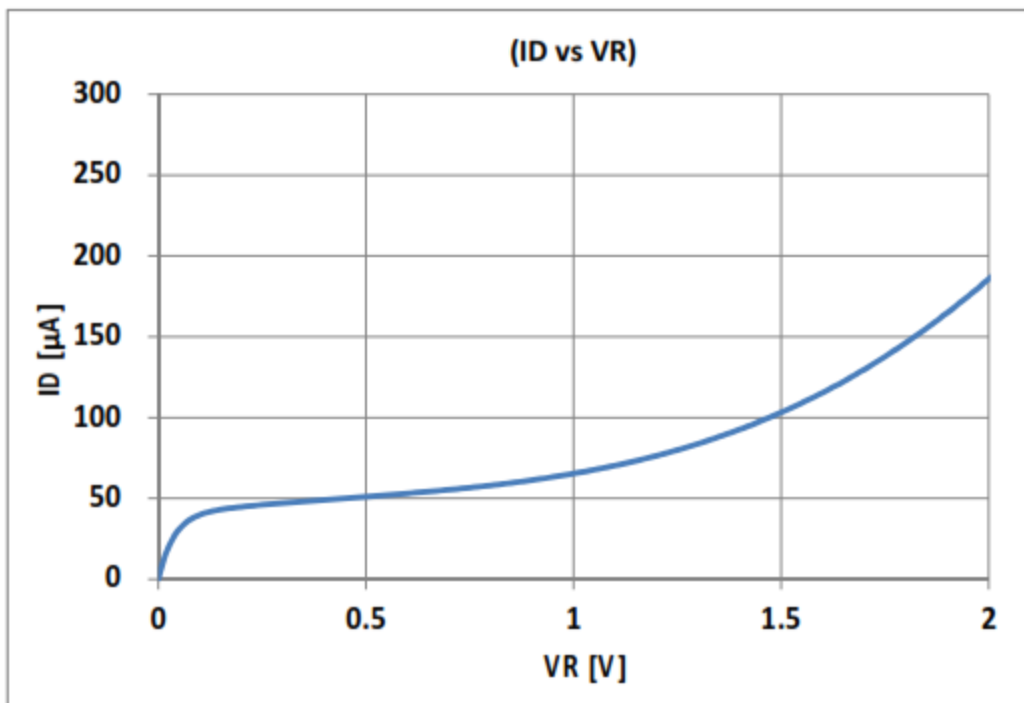


Quantum Efficiency



The information contained herein is subject to change without notice.

2025-05-20



The information contained herein is subject to change without notice.

2025-05-20