



3Northway Lane North Latham, New York 12110.

Tollfree:1.800.984.5337

Phone:1.518.956.2980

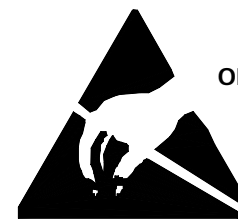
Fax:1.518.785.4725

Http://www.marktechopto.com

SPECIFICATION

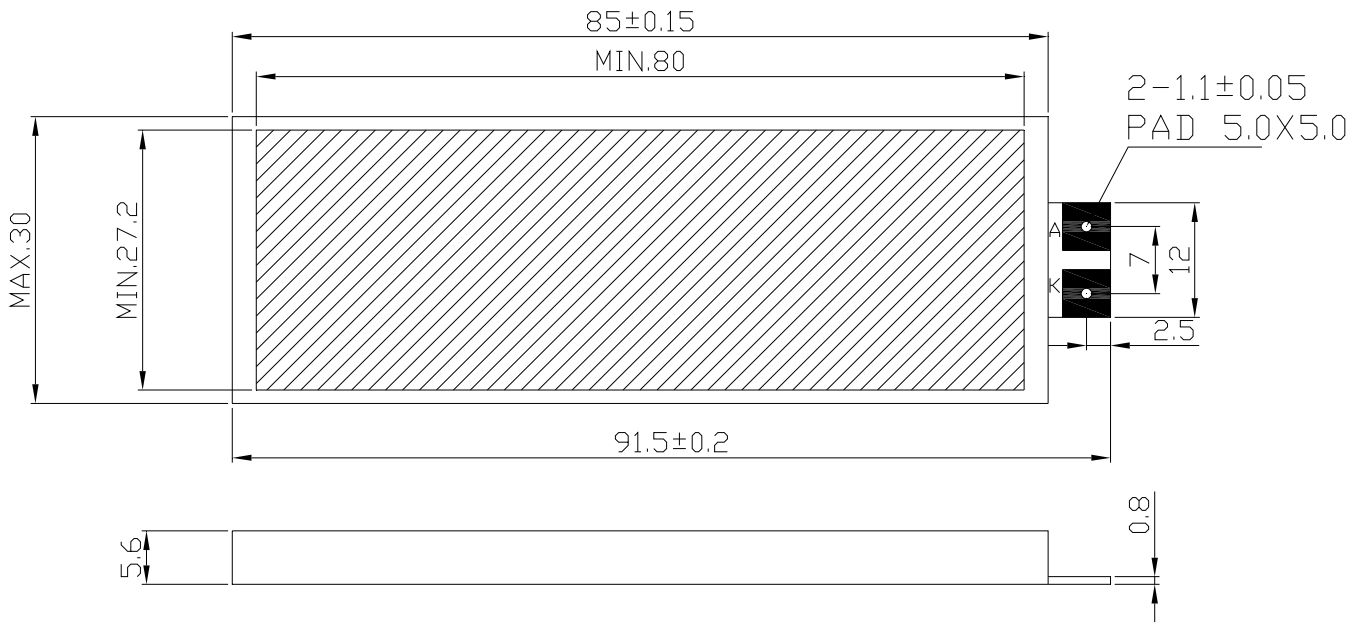
PART NO. : MTBL3M11-UYG

LED BACKLIGHT



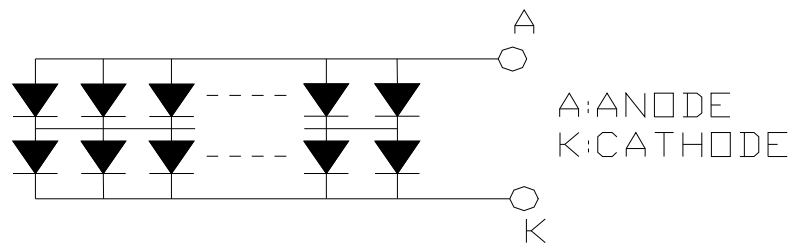
ATTENTION
OBSERVE PRECAUTION
FOR HANDLING
ELECTRO STATIC
SENSITIVE
DEVICES

Dimensions



1. All dimensions are in millimeters.
2. Tolerance is ± 0.20 mm unless otherwise noted.

Internal Circuit Diagram



LED NUMBERS: $28 \times 2 = 56$

Description

Part No.	LED Chip	
	Material	Emitting Color
MTBL3M11-UYG	GaP/GaP	Yellow Green

Absolute Maximum Ratings at Ta=25 °C

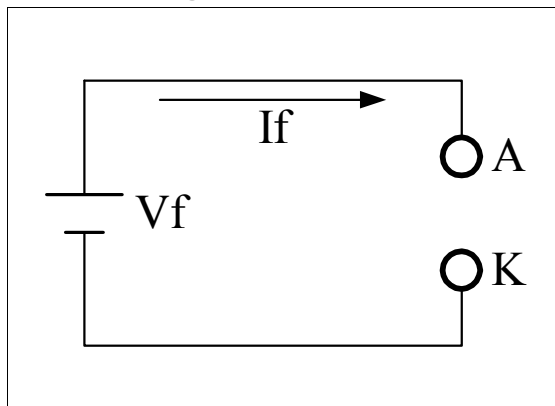
Parameter	Symbol	Rating	Unit
Power Dissipation	PD	2.688	W
Pulse Current(1/10Duty Cycle,0.1ms Pulse Width.)	IFP	100	mA
Forward Current	IF	560	mA
Reverse (Leakage)Current	Ir	280	uA
Reverse Voltage	VR	10	V
Operating Temperature Range	Topr.	-20 to +70	°C
Storage Temperature Range	Tstg.	-30 to +80	°C
Soldering Iron Temp.(1.6mm from seating plane)		350 for 3s MAX.	°C

Electrical and Optical Characteristics:

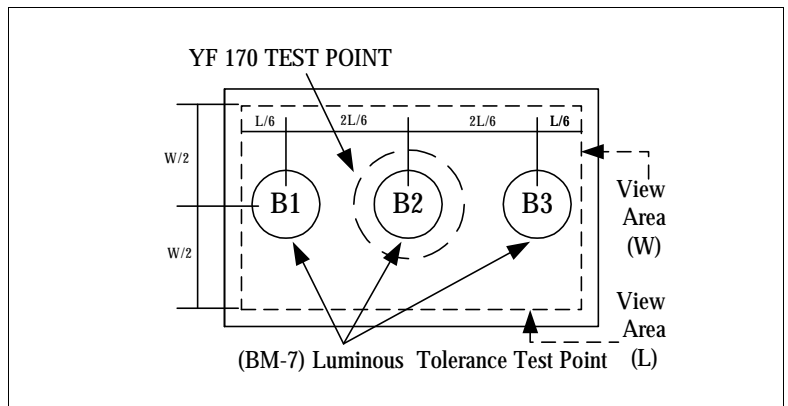
Parameter	Symbol	Condition	Min.	Typ.	Max.	Unit
Luminous Intensity	Iv	IF=280mA	140	235	-	cd/m ²
Forward Voltage	Vf	IF=280mA	-	4.2	4.8	V
Luminous Uniformity		IF=280mA	70	-	-	%
Dominant Wavelength	λd	IF=280mA	570	573	575	nm
Reverse Current Per Chip (Leakage Current Per Chip)	Ir	Vr=5V	-	-	10	μA
Spectrum Line Halfwidth	Δλ	IF=280mA	-	30	-	nm

Remark

★1. Testing Method



★2. Measured Method



(1) The test equipment is "TOPCON"BM-7 . Field (θ) =2° V =1° =0.2°

(2)The "TOPCON"BM-7 test position of luminous intensity is B1~B3.

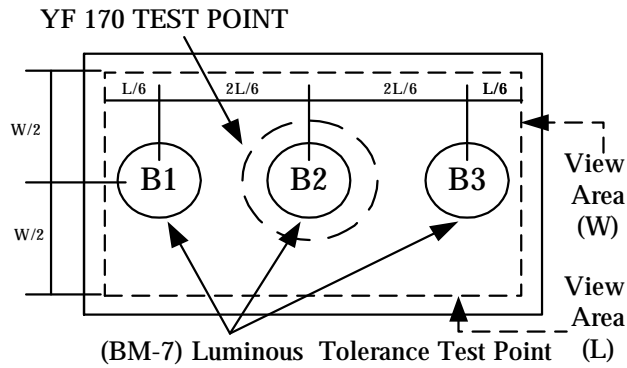
★3. The "TOPCON"BM-7 test

Position of luminous Uniformity =
$$\frac{B(\text{MIN.})}{B(\text{MAX.})} \times 100\%$$

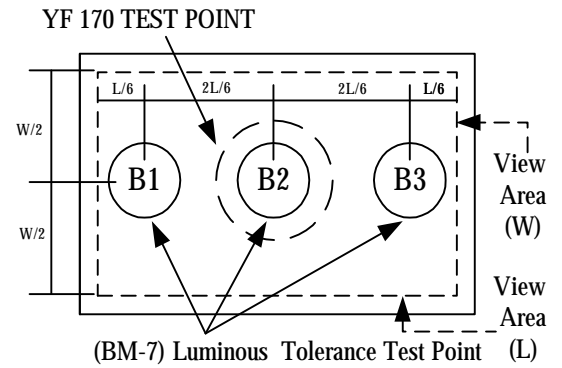
(附表一)

電性、輝度量測表

The test equipment is LUX Meter



The test equipment is "TOPCON"BM-7



TEST CONDITIONS : $V_{in} = 4.2V$, $I_f = 280\text{ mA}$ $T_a = 25^\circ\text{C}$

(1) The test equipment is "TOPCON"BM-7 Field (θ) $\blacksquare = 1^\circ$ $\square = 0.2^\circ$ $\square = 0.1$

NO	VF	If (mA)	LUX	Location(CD/m^2)						AVG	Uniornity (%)
				B1	B2	B3	B4	B5	B6		
1	4.15	280		243	266	234	-	-	-	248	88
2	4.14	280		239	257	236	-	-	-	244	93
3	4.15	280		236	267	240	-	-	-	248	88
4	4.15	280		232	259	237	-	-	-	243	89
5	4.14	280		238	265	236	-	-	-	246	89

Sulfur-sensitive

- I There is silver-plated metal part on the inner/outer side of the outer package.
If exposed to the condition with corrosive gas, the silver plating surface may go bad, which will affect soldering strength and optical properties. Therefore, after opening it must be kept in a sealed container, etc.**
- I Materials contain sulfur component (gasket, adhesive, etc.) may have bad effects on the surface of the coating, so please do not use such materials in the product.**
- I In cardboard boxes and rubber, even in the atmosphere may contain minute amount of corrosive gases; In addition, the resin material may also contain halogen which has a bad effect on the surface of the coating.**
- I Even if the soldering installation and product assembly finished, by the effect of corrosive gas generated by relative materials of LED and external injected, the coating surface may go bad, so it is necessary to design the product taking into account the above factors.**
- I If requires, it is best to use a silicone washer, but be aware that low molecular silicone may cause the product poor contact.**
- I Keep the product in location where has less temperature change, because moisture condensation would be generated under a condition of strong temperature change.**

DISCLAIMER

- 1. Our department reserves the right(s) on the adjustment of product material mix for the specification.**
- 2.The product meets our department published specification for a period of twelve (12) months from date of shipment.**
- 3.The graphs shown in this datasheet are representing typical data only and do not show guaranteed values.**
- 4.When using this product, please observe the absolute maximum ratings and the instructions for using outlined in these specification sheets. Our department assumes no responsibility for any damage resulting from the use of the product which does not comply with the absolute maximum ratings and the instructions included in these specification sheets.**
- 5.These specification sheets include materials protected under copyright of our department.
Reproduction in any form is prohibited without obtaining our department's prior consent.**
- 6.This product is not intended to be used for military, aircraft, automotive, medical, life sustaining or life saving applications or any other application which can result in human injury or death. Please contact authorized our department sales agent for special application request.**