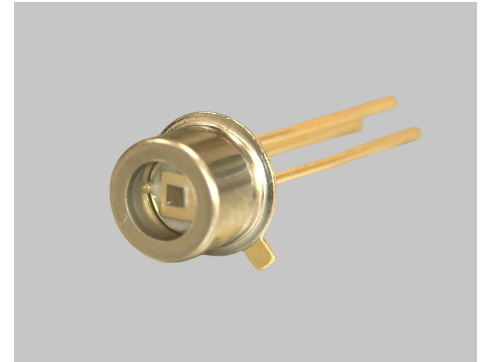


### Sensitivity Wavelength Range: 220nm ~ 358nm

The MT12-003 is a square (0.71mm x 0.71mm) 0.50mm<sup>2</sup> active area Silicon Carbide Photodiode in an isolated, hermetic TO-46 package with a UV transmitting glass window. Custom packaging options for this die are available



#### FEATURES

- > Hermetically Sealed Package
- > TO-46 Can Package
- > High Sensitivity
- > Spectral Range: 220nm - 358nm

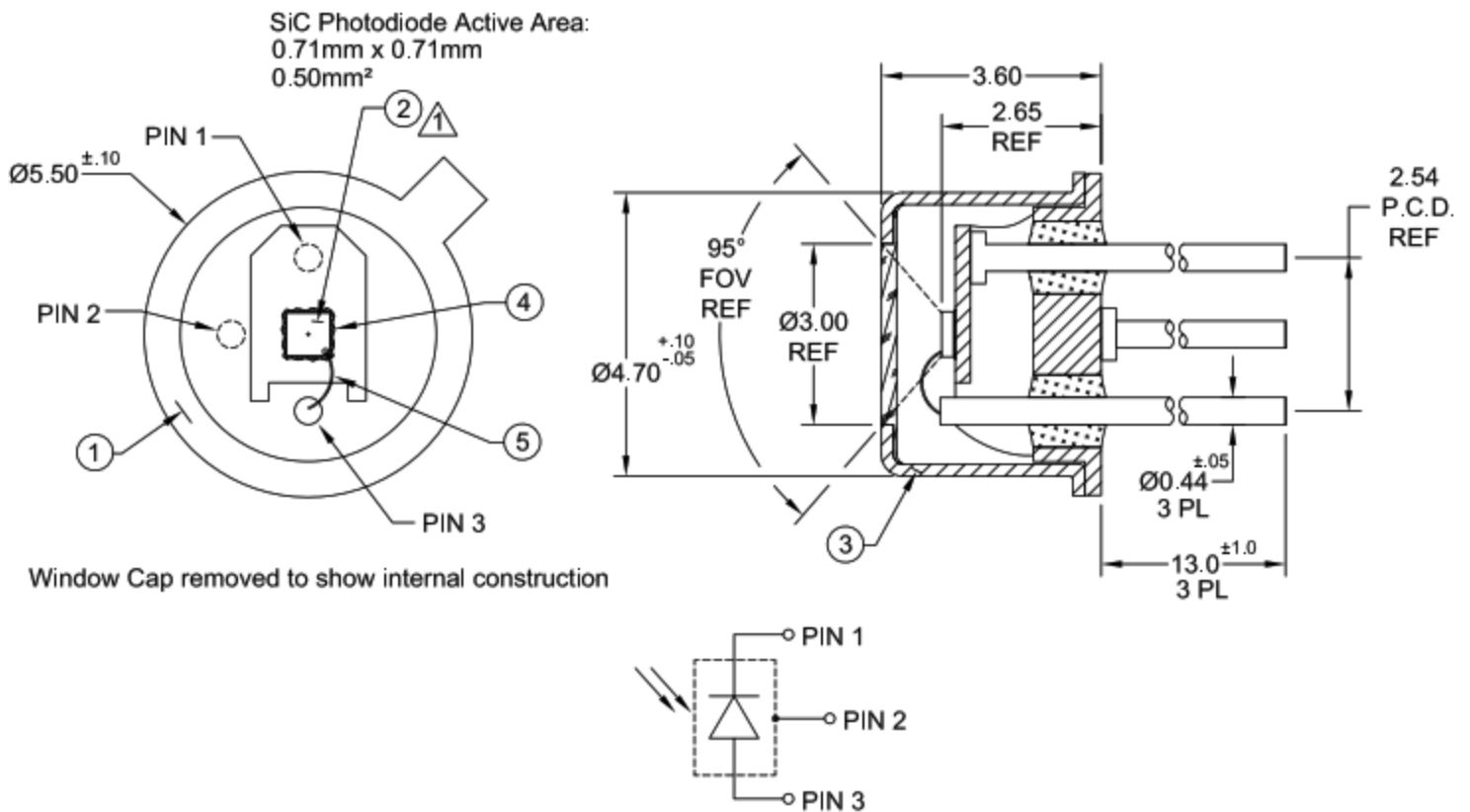
### Absolute Maximum Ratings (Ta=25°C)

ITEMS	SYMBOL	RATINGS	UNIT
Operating Temperature Range	Topr	--	°C
Storage Temperature Range	Tstg	-55 to +170	°C
Reverse Breakdown Voltage	Vr	50	V

### Electrical & Optical Characteristics (Ta = 25°C)

ITEMS	SYMBOL	CONDITIONS	MIN	TYP	MAX	UNIT
Responsivity	R	λ=220nm	--	0.013	--	A/W
Responsivity	R	λ=280nm	--	0.13	--	A/W
Responsivity	R	λ=358nm	--	0.013	--	A/W
Dark Current	Id	VR=1V	--	0.1	10	pA
Sensitivity Range	λ	VR=0V	220	--	358	nm
Breakdown Voltage	V(BR)	IR=10uA	50	--	--	V
Serial Capacitance	Cs	V=0V, 1MHz	--	8.0	--	pF

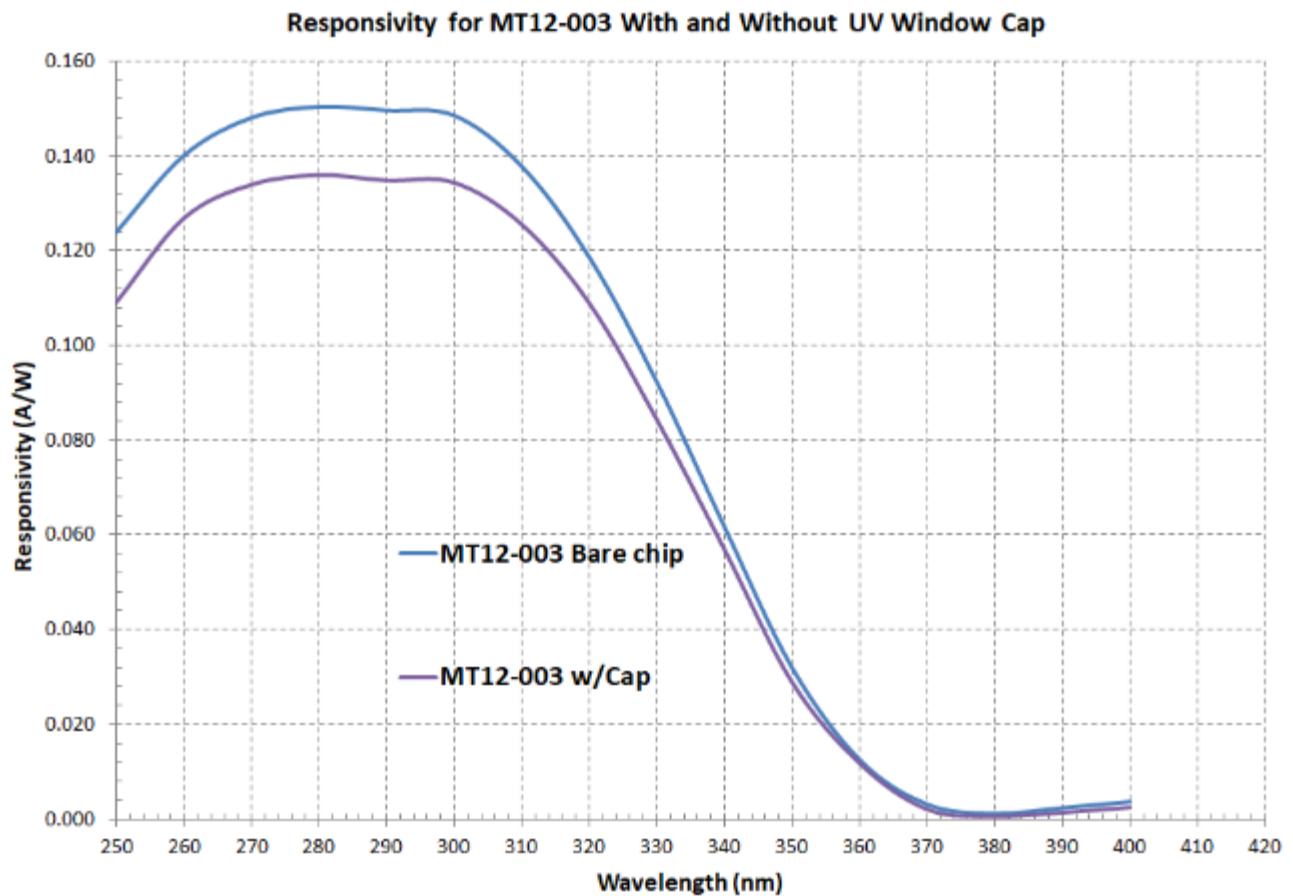
Package Dimensions



The information contained herein is subject to change without notice.

2025-09-19

## Responsivity



The information contained herein is subject to change without notice.

2025-09-19